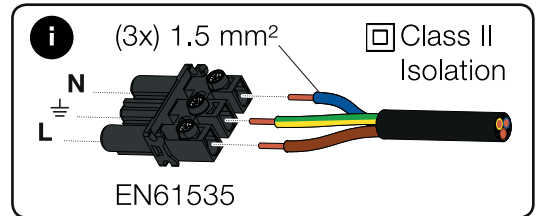


# Powerdot

935-PD10W-GST  
 935-PD10-GST

# POWER dot



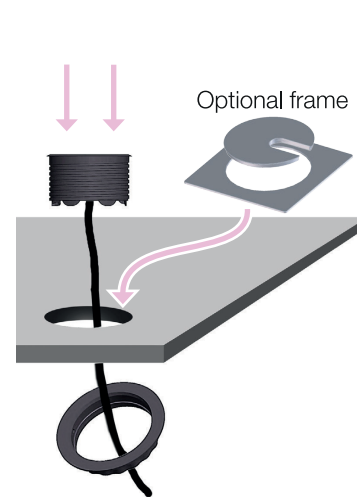
## CONTENT:



### A DRILL



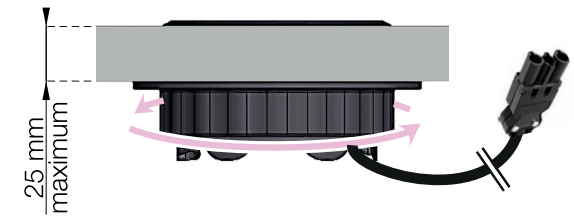
### B INSERT



### C

#### TURN CLOCKWISE & PLUG IN

Turn the plastic fastening nut as far up the thread as possible. Make sure that it has been thoroughly tightened. Lastly, connect the GST18i3.



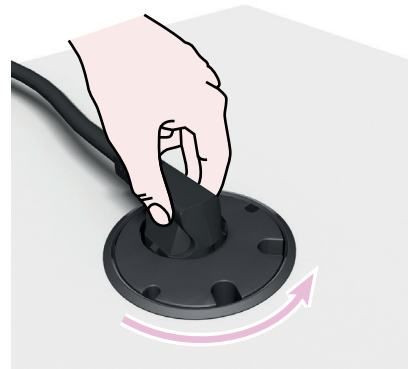
- 4 feed-throughs  
(Ø7, Ø9.5 mm)

- 1 GST18i3  
Cable length according to order (max 1.2 m)

### 1

#### CONNECT & RELEASE

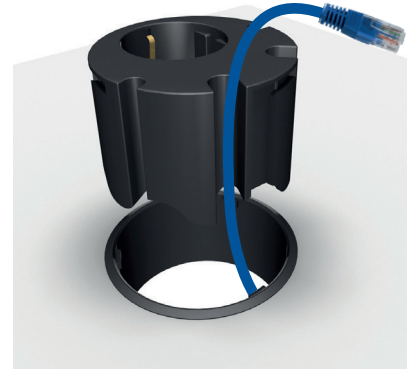
Rotate plug counter-clockwise until loose.



### 2

#### ORGANIZE

Cables according to size.



### 3

#### LOCK

Rotate plug clockwise to reattach.

