

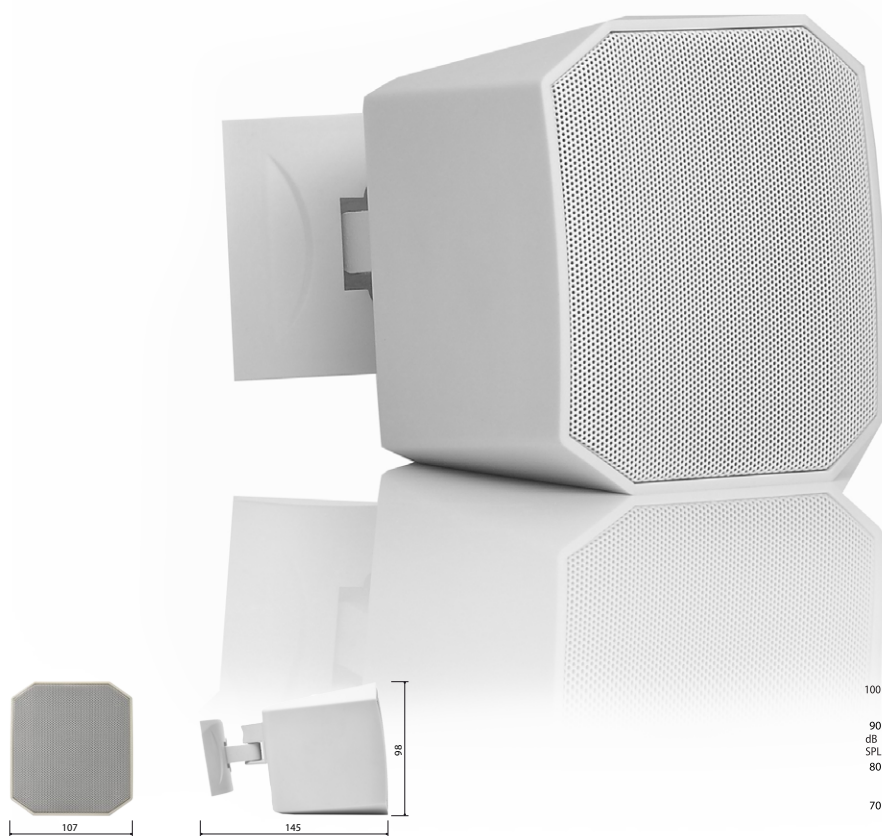
VIVA Wall Mount Plastic Loudspeakers

Latest design powerful speakers for background music.

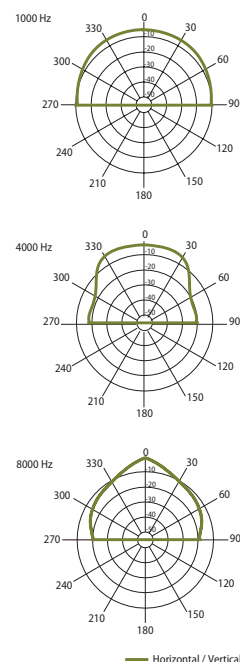


VIVA 3

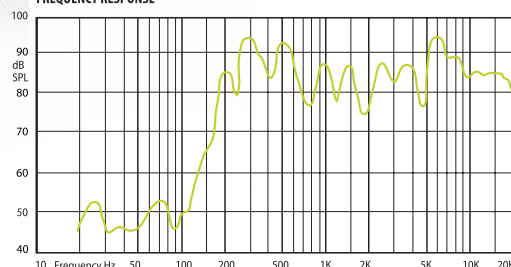
Our newest high profile loudspeaker ViVa 3 combines best design and great sound. VIVA 3 is our smallest cabinet loudspeaker with elegant mounting bracket. It has built in high quality 3-inch precision coaxial driver with excellent sound reproduction. For those who will design 100V systems, can install this speaker directly in, the loudspeaker has built in 100V transformer. For low impedance speaker lines- 16 Ω speaker input can be selected. This allows to use more speakers in one chain. ViVa3 was equipped with professional input and output Phoenix connectors to make installation simple and easy. Speakers are designed to use in upscale shops, restaurants, bars and other places, where high quality background music is required. In combination with our subwoofer SUB 100V, sound can be enhanced with low frequency.



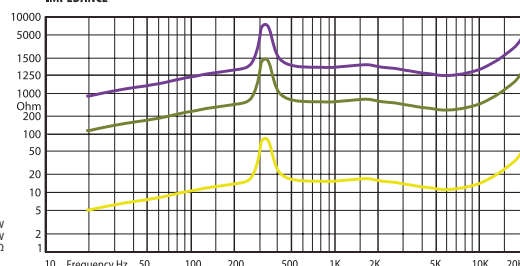
HORIZONTAL / VERTICAL POLAR DIAGRAMS



FREQUENCY RESPONSE



IMPEDANCE



Technical Specifications		VIVA 3
Rated power		15W
Transformer power taps		15W - 7,5W - 16Ω
Sensitivity		86dB (1W/1m)
Maximum SPL		98dB (Pmax/1m) at 1000Hz
Frequency response		200Hz - 20kHz
Dispersion at 1000 Hz		180° conical
Driver dimensions		3" (72mm) woofer, 1" (25,4mm) tweeter
Dimensions		145 mm x 107 mm x 98 mm
Weight		0,9 kg
Material		Housing - plastic, grill - aluminum and U-bracket - steel
Colour		White (RAL 9016), black (RAL 9017)