

Pendant Hanging Kit (MC-PHK16-12PK)

Installation & Operation Guide



PRODUCT DESCRIPTION

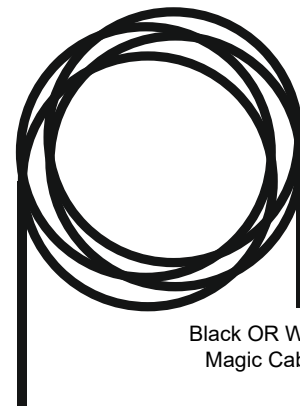
The Pendant Hanging Kit includes pre-cut Magic Cable lengths, snap-hooks, grippers and connectors that allow an installer to hang twelve (12) pendant loudspeakers with snap-hook suspension.

Kit includes:

- 12 Magic Cable Hanging Whips (black or white)
- 16.4' (5m) length [suspension height up to 14.8' (4.5m)]
- 25 Griplock® cable gripper with snap-hook
- 25 Griplock cable grippers
- 25 Scotchlok™ electrical connectors

FEATURES

- Each Magic Cable combines two support cables and a set of electrical conductors in one color-matched drop
- Easily install the support cable members using the Griplock connectors and snap-hooks
- Make durable electrical connections with the Scotchlok connectors



Black OR White
Magic Cable



Griplock
dual-ended cable
connector



Griplock cable
connector
with snap-hook



Scotchlok
electrical
connector

RIGGING AND ELECTRICAL SAFETY



IMPORTANT: Installation of loudspeakers should only be performed by trained and qualified personnel. All electrical connections must conform to applicable city, county, state, and national (NEC) electrical codes.



DANGER: The Magic Cable is rated with a Working Load Limit (WLL) of 80 lbs (36.3 kg), and the Griplock snap-hooks have a WLL of 45 lbs (20.4 kg); both with a 5:1 safety margin. No single rigging fitting using the Griplock cable gripping device should ever be subjected to a load that is greater than 50 lbs (22.7 kg) [45 lbs (20.4 kg) if using the snap-hooks]. Failure to heed this warning could result in injury or death!



DANGER: It is possible to experience severe electrical shock from a power amplifier. Always make sure that all power amplifiers are in the "OFF" position and unplugged from an AC Mains supply before performing electrical work.



IMPORTANT: The Magic Cable is intended for installation of suspended loudspeakers. Biamp does not recommend using it to hang or suspend other objects.



IMPORTANT: Refer to the sections on installation and connections later in this manual for additional information on rigging and electrical safety.



IMPORTANT: The Griplock cable locking devices (connectors and snap-hooks) described in these instructions are only rated for static indoor installations. They should not be used to mount the loudspeakers outdoors or other locations subject to moisture, weather elements or dynamic loads.



CAUTION: It is strongly recommended that a licensed and certified professional structural engineer approve the mounting. Severe injury and/or loss of life may occur if this product is improperly installed.



DANGER: It is essential that the secondary cable be secured to a suitable load-bearing point separate from the primary loudspeaker mounting point, with as little slack as possible so as not to develop undue kinetic force if the primary mount were to fail.



IMPORTANT: Magic Cable's strength members are hardened stainless steel. Cutting the cables with tools not rated for such use will damage those tools. You should use a tool rated for cutting ACSR (Aluminum Conductor Steel Reinforced) cables such as the Klein J2000-59.



CAUTION: The ends of the stainless steel support elements are sharp and may cause injury. Please handle with care.



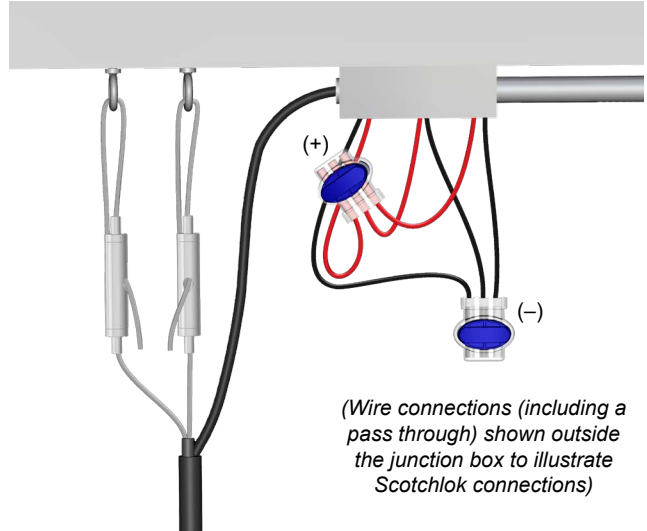
INSTALLATION

There are several methods of installation. All involve attaching the support cables to, or around, structural elements. Some of the methods are shown below. Please use the appropriate method for your application.



Figure 1a. Support cables can loop around structural members or through anchored hardware

! VERY IMPORTANT: The Griplock cable locking devices included with the pendants and described in these instructions are only rated for static indoor installations. They should not be used to mount the loudspeakers outdoors or other locations subject to moisture, weather elements or dynamic loads.



(Wire connections (including a pass through) shown outside the junction box to illustrate Scotchlok connections)

Figure 1b. A typical installation with wiring connections in a nearby junction box

Support Cable Installation

1. The outside insulation has been slit about 13" (330mm) with the rip cord exposed to access to the interior support and audio cable elements on both ends of the cable. Strip back that outer cover. There are rip cords in each of the interior elements for easy removal of the insulation.
2. Pull the rip cords down as far as needed and cut off any extra cable insulation (Figures 2a , 2b).

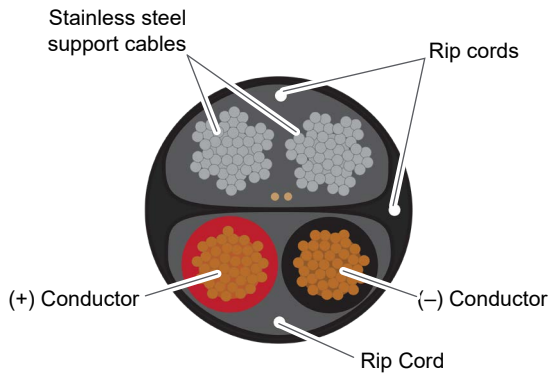


Figure 2a. Magic Cable cross-section

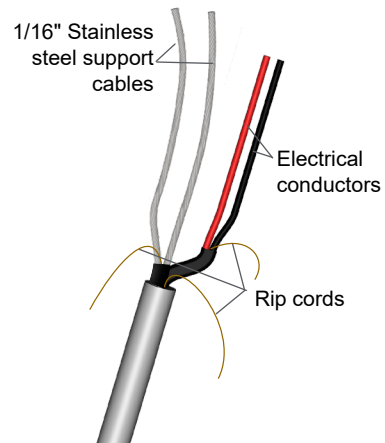


Figure 2b. Cable stripped with rip cords showing

Support Cable Installation (continued)

3. Insert one support cable into the bottom end of a Griplock and push it up until the end of the wire protrudes from the side hole (Figure 3a).
4. Pull the end of the cable through the Griplock enough to either form a loop over the structure or through structurally anchored hardware and insert back through the Griplock and out the remaining side hole. The ends of the Griplock device are spring-loaded and should be depressed to "unlock" the cable and allow it to be adjusted.
5. Install the secondary support cable in the same way, giving it some slack to keep it from bearing weight. The secondary mount should be close to the primary one to avoid any kinetic force if the primary mount should fail. See Figure 1b for reference.
6. Make the lower support cable connection to the pendants by attaching a griplock snap-hook on the end of each cable. Roughly determine the length of the drop and strip back / trim the cable accordingly. If the cable needs to be threaded through an end cap before adding the snap-hooks, please do that first.
7. Insert each cable into the snap-hook cable gripper and allow at least 1" of cable to extend through the exit hole to ensure full gripping function.
8. Follow the loudspeaker instructions to connect the snap-hooks to the loudspeaker. Fully support the weight of the device until all support connections are secure.

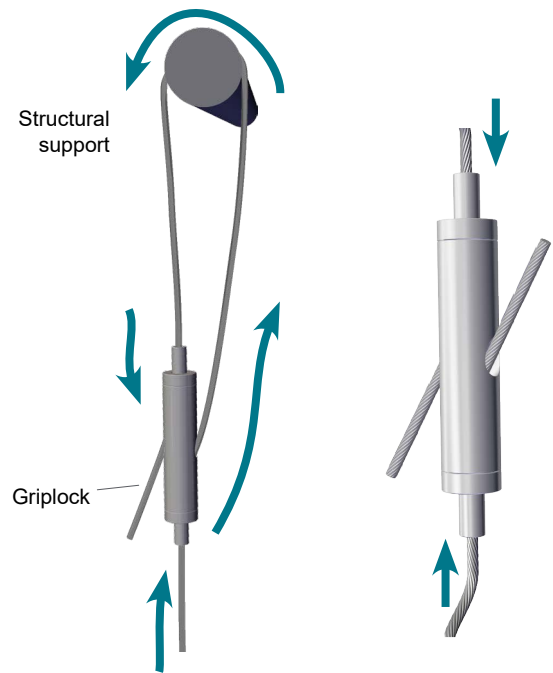


Figure 3a. Cable path around a support

Figure 3b. Depress ends to adjust cable



IMPORTANT: Each cable must extend at least 1" (25 mm) out the exit hole to ensure full gripping function.

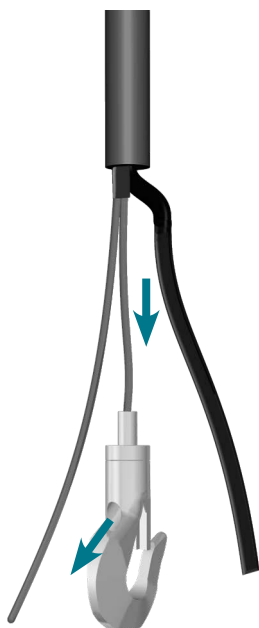


Figure 4a. Insert each cable into a snap-hook

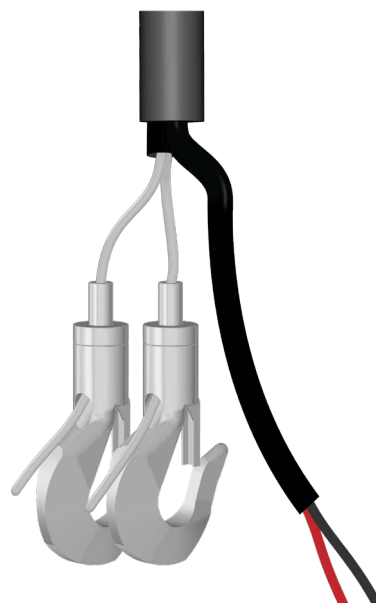


Figure 4b. Lower cable end prepared for pendant loudspeaker connections

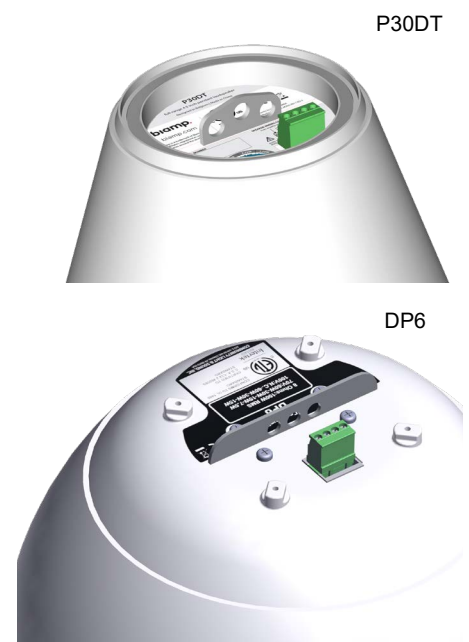
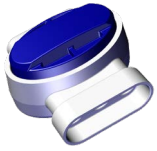


Figure 4c. Examples of other Biamp pendant mounting brackets

Wiring



Scotchlok connectors are provided for easy wire connections on the upper end of the magic cable. Each connector can secure an input, output and "pass through" wire.

1. Fully insert positive (red) OR negative (black) conductors into one Scotchlok connector. See Figures 5a and 5b for correct and incorrect insertion.
2. Using pliers, firmly press the oval "plunger" to secure the wires (Figures 6a, 6b). These are single use connectors; once the plunger has been depressed the connector must be replaced if there is a problem with the connection.

Note: The connections should be housed in a junction box, but may not be subject to any force pulling on the wire or stressing the connectors.

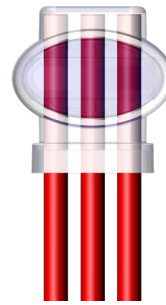


Figure 5a. CORRECT wire insertion with conductors inserted all the way to the end of the connector

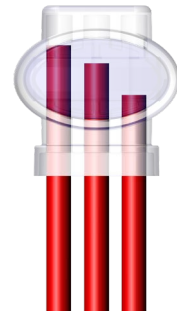


Figure 5b. INCORRECT wire insertion in Scotchlok connector - conductors not fully inserted - circuit not complete

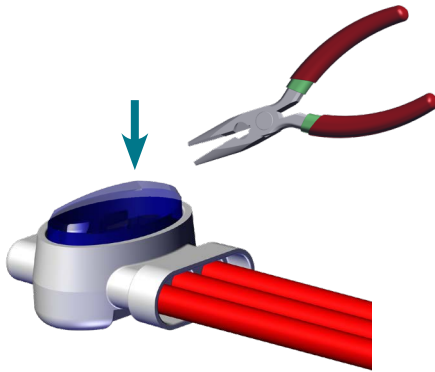


Figure 6a. Depress the scotchlok plunger to fully secure the conductors

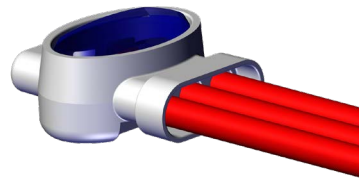
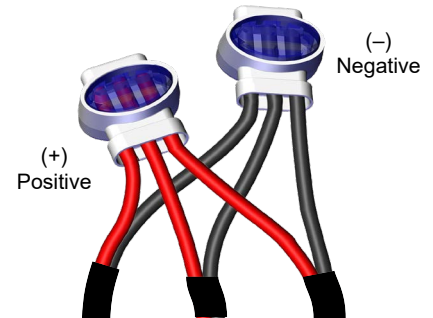


Figure 6b. Plunger depressed; conductors secured



Typical connection of conductors (input, output and pass through pairs)

CONTACT US

Email: support@biamp.com

Web: support.biamp.com

Note: Every effort has been made to ensure that the information contained in this manual was complete and accurate when printed. However, due to ongoing technical advances, changes or modifications may have occurred that are not covered in this manual. The latest version is available at support.biamp.com.

585.0079 4MAY2020