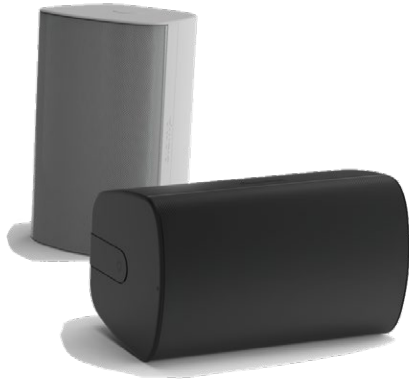


# EX-S10SUB

TWO-WAY 10-INCH  
SURFACE MOUNT SUBWOOFER



## APPLICATIONS

### DISTRIBUTED

Bars and Restaurants · Hotels · Casinos  
Shopping Malls · Health and Fitness Clubs  
Houses of Worship · Presentation Spaces  
Sports Facilities · Outdoor Entertainment  
Exhibit Halls · Amusement and Theme  
Parks

## DESCRIPTION

The Desono™ EX surface mount loudspeakers provide excellent acoustic performance in elegant, attractive aesthetics for a diverse range of indoor and outdoor distributed applications. EX Series includes three two-way, full range models and one matching-enclosure subwoofer. All full-range models include 70V/100V transformers and low impedance inputs. They deliver high voice intelligibility, wide bandwidth and exceptional uniform coverage.

The Desono EX-S10SUB, 10" subwoofer provides additional deep bass to the EX-S6 or EX-S8 systems for full-range, foreground music playback. With its discreet matching enclosure, EX-S10SUB easily blends in the background of an application, making it easy to hear, but difficult to spot

Designed for easy and fast installation, our innovative, patented ClickMount™ brackets provide installers with two distinct mounting options. The ClickMount pan-tilt bracket provides indexed aiming control and allows for mounting EX Series quickly in either vertical or horizontal orientation without moving the bracket position. The ClickMount U-Bracket is also available for low profile mounting or exterior use and includes the ClickPlug with an integrated gland nut for weather-resistant applications. Both brackets are theft and tamper resistant.

## FEATURES

- Exceptional audio clarity with discreet styling
- Easy to install with two mounting options
- Low frequency boost for distributed applications
- ETL listed to comply with UL 1480A, CSA 62368-1, CE marked, and RoHS compliant

## TECHNICAL SPECIFICATIONS

Operating Mode	Passive, low-impedance operation		
Operating Environment	Indoor/Outdoor		
Operating Range	50 Hz to 200 Hz		
Nominal Beamwidth (H x V)	omnidirectional		
Transducers	LF 1 x 10" (254mm) treated paper cone		
Continuous Power Handling @ Nominal Impedance	Single Amp	49V	300W @ 8 ohms (1200W peak)
Nominal Sensitivity @ 1m	Half Space	@ 1W 92 dB	@ 2.83V 92 dB
	Whole Space	86 dB	86 dB
Nominal Maximum SPL	Half Space	Peak 123 dB	Continuous 117 dB
	Whole Space	117 dB	111 dB
Required Accessories	40 Hz, 12dB/Oct High pass filter, DSP		
Recommended Amplifiers	300W - 600W @ 8 ohms (49V-69V)		

## PHYSICAL

Input Connection	Lever-actuated wire clamping 4-position terminal block with pass-through
Controls	None
Mounting Provisions	ClickMount pan-tilt bracket or ClickMount U-Bracket
Compliance	ETL listed to comply with UL 1480A, CSA STD C22.2# 62368-1, and CSA STD C22.2# 60950-22 Certified to EN54-24
Environmental Rating	IP54 per IEC 60529
Dimensions H x W x D	20.7" x 12.1" x 12.3" (527mm x 308mm x 313mm)
Weight	TBD
Finish	Refer to the Technical Drawings (page 2)
Models (Order by mounting option)	<b>EX-S10SUB-CM [-B,-W]</b> - subwoofer with large ClickMount pan-tilt bracket <b>EX-S10SUB-UB [-B,-W]</b> - subwoofer with ClickMount U-Bracket and ClickPlug

## OPTIONS

Accessories	<b>CMX-LG [-B,-W]</b> - Large ClickMount pan-tilt bracket kit <b>EXUB-S10 [-B,-W]</b> - EX-S10 ClickMount U-Bracket kit
-------------	--

*Biamp strives to improve its products on a continual basis. Specifications are therefore subject to change without notice.*

*Data presented on this spec sheet represents the basic performance specifications for the model. For a detailed analysis of this loudspeaker's performance, please download the GLL file and/or the CLF file from our website: [biamp.com](http://biamp.com)*

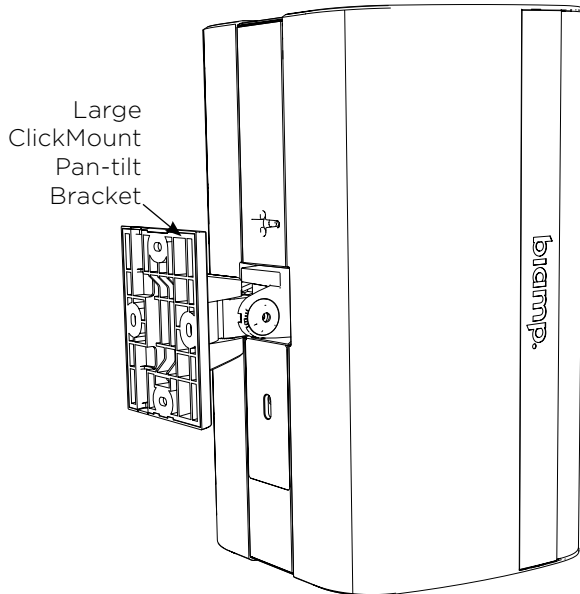
DESONO

# EX-S10SUB

TWO-WAY 10-INCH  
SURFACE MOUNT SUBWOOFER

## EX-S10SUB-CM

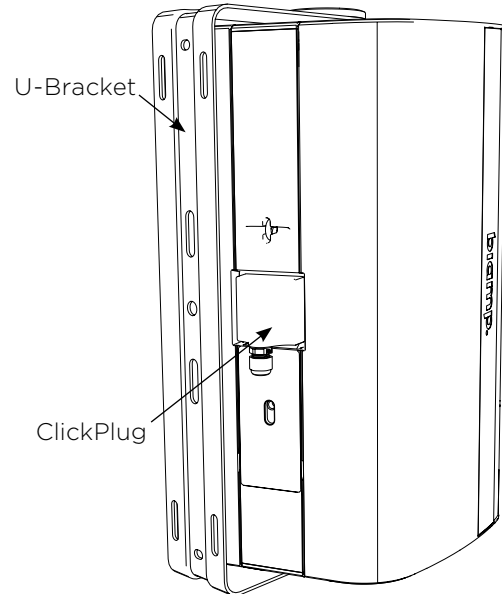
EX-S10SUB Subwoofer with ClickMount pan-tilt bracket



**Pivot angle (portrait orientation)**  
Horizontal 120° in 10° increments  
Vertical 48° in 8° increments

## EX-S10SUB-UB

EX-S10SUB Subwoofer with ClickMount U-Bracket and ClickPlug



**Pivot angle**  
200° in 10° increments

## TECHNICAL DRAWING / DIMENSIONS / FINISH

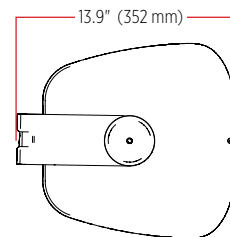
**H x W x D**  
20.7" x 12.1" x 12.3"  
(527mm x 308mm x 313mm)

**Unit Weight**  
TBD

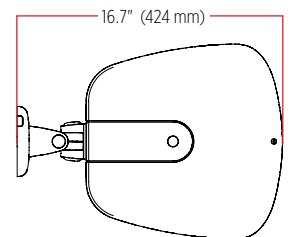
**Shipping Weight**  
TBD

**Grille**  
Powder-coated perforated Marine Grade aluminum backed with hydrophobic cloth  
Black or White

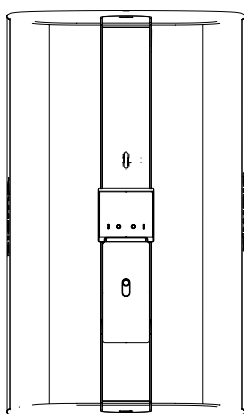
**Enclosure / Finish**  
UL94 5VB rated ABS plastic, matte finish  
Black or White



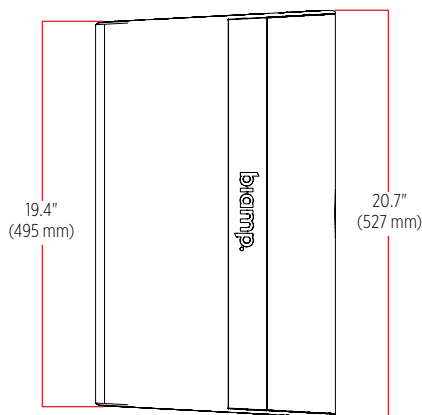
Top (with U-Bracket)



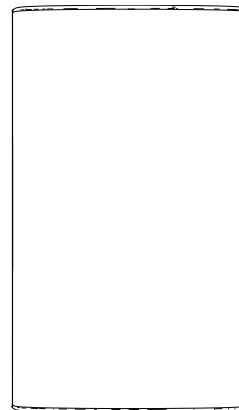
Top (with pan-tilt)



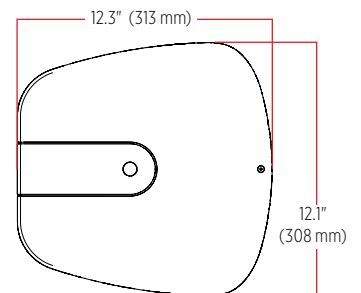
Rear



Side



Front



Top

**biamp.**

A: 9300 S.W. Gemini Drive Beaverton, OR 97008 USA

T: +1 503.641.7287

W: [www.biamp.com](http://www.biamp.com)

DESDS-707-2101-EN-R1