

TAIDEN®

Network Central Control System



Excellent solutions for conferences

HCS-6100 Series Widescreen Touch Panels

- 16:9 widescreen color display
- High resolution and contrast ratio, high brightness and wide viewing angles
- Latest graphic user interface
- Supports WiFi control
- Supports wired Ethernet control
- Mini-USB port and type A USB port
- Supports SD card (up to 4 GB)
- Programmable touch buttons
- AV interface - supports various video formats, PIP (picture in picture) function
- Built-in loudspeaker
- Optional color: black and gray



HCS-6107F
7" Flush-mounting Widescreen
Touch Panel (wired Ethernet)



HCS-6107TPW
7" Widescreen Touch Panel
(WiFi, wired Ethernet)



HCS-6110TP
10" Widescreen Touch Panel
(wired Ethernet)



HCS-6100MCP4/WS
Network Central Control System Main Unit



HCS-6112TP
12" Widescreen Touch Panel
(wired Ethernet)



HCS-6115TP
15" Widescreen Touch Panel
(wired Ethernet)



Supports WiFi/ wired Ethernet

HCS-6100 Series Widescreen Touch Panels feature unmatched color, high resolution and contract ratio, high brightness and wide viewing angles. They also provide audio and video function and a USB port, and support SD card, WiFi control and wired Ethernet control.

Type	Dimension	Resolution	WiFi	wired Ethernet	Touch button	Video input	Audio input	Lithium-ion Batteries	Mini USB	A-type USB	SD Card	Built-in loudspeaker	Color
HCS-6107F_G	7	800×480	-	✓	6	✓	-	Built-in	-	-	Up to 4GB	✓	Gray
HCS-6107F_B													Black
HCS-6107TPW_G	7	800×480	✓	✓	6	✓	-	Built-in	-	-	Up to 4GB	✓	Gray
HCS-6107TPW_B													Black
HCS-6107TPS_G	7	800×480	✓	✓	6	✓	-	Built-in	-	-	Up to 4GB	✓	Gray
HCS-6107TPS_B													Black
HCS-6110TP_G	10.2	800×480	-	✓	8	✓	✓	Optional	✓	✓	Up to 4GB	✓	Gray
HCS-6110TP_B													Black
HCS-6112TP_G	12.1	1280×800	-	✓	10	✓	✓	Optional	✓	✓	Up to 4GB	✓	Gray
HCS-6112TP_B													Black
HCS-6115TP_G	15.4	1280×800	-	✓	10	✓	✓	Optional	✓	✓	Up to 4GB	✓	Gray
HCS-6115TP_B													Black



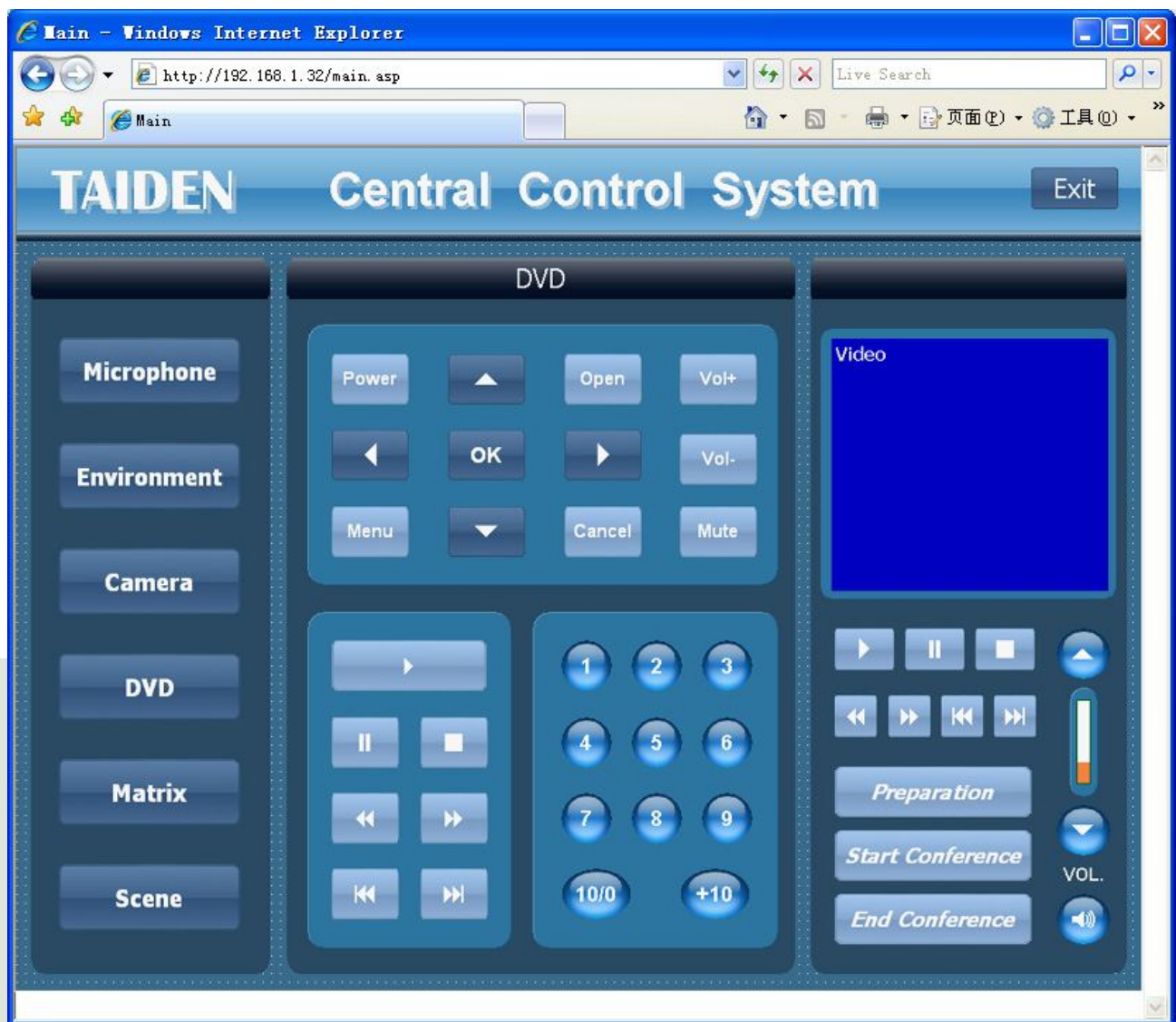


HCS-6100 Network Central Control System Main Unit

- Fully supporting network control and network cascade
- Supporting WiFi/Wired Ethernet control, multiple terminals can simultaneously control the same main unit
- Supports multi-room management function (cooperating with HCS-6100W-RM)
- Supports room scheduling function (cooperating with HCS-6100W-RS)
- Built-in Web Server, system controlling can be realized with web browser on iPad, iPhone and Android platform handheld terminal
- 32-bit high-performance CPU, clocked at 400 MHz, 64 MB large memory, 64 MB large capacity FLASH, super processing power
- 2 RJ45 sockets as Ethernet interface, connection to computer software or wired touch panel, executing commands via remote control
- Open programmable control platform, user-friendly operation interface
- Exclusive dynamic configurable RS232C/485 ports, supporting all kinds of control protocols, seamlessly integrated with TAIDEN Digital Conference System, constitute perfect intelligent conference solutions
- Built-in IR learning, no learning apparatus needed, easy to use
- Audio mixer with volume control (2 CHs stereo inputs with independent volume control, 1 CH stereo output)
- 8 IR output ports used for remote control of the VCR, DVD, CD, MD and projectors
- 8 digital I/O control ports and 8 low relay control ports for controlling currently connected devices such as projector lift (up/down), curtains (open/close), projector (pitching), lightings (on/off), and so on
- 8 RS232C ports can control video matrix or plasma display
- Menu, working status and real-time clock can be clearly displayed by LCD display and LED indicator on front panel
- Bilingual (Chinese/English) software for system configuration
- User-defined scene save and recall facilities
- RS232C port connected to PC for setting up, supervisory controlling and uploading programs
- USB Host interface can be connected to USB disk for system upgrading and extending memory
- USB Device interface connecting to PC, for downloading and backup project file
- Built-in TAIDEN digital conference control protocol, to implement microphone control, voting control and voting results display easily
- Built-in high-capacity E²PROM, up to 512 normal/high definition camera predefined positions can be stored
- Max. output current by TAINET: 1800 mA, 24 V
- Compatible with HCS-6000 series wall switch, power controller, lighting controller and fluorescent lights dimming controller
- Compact structure, can be mounted in 19-inch cabinet

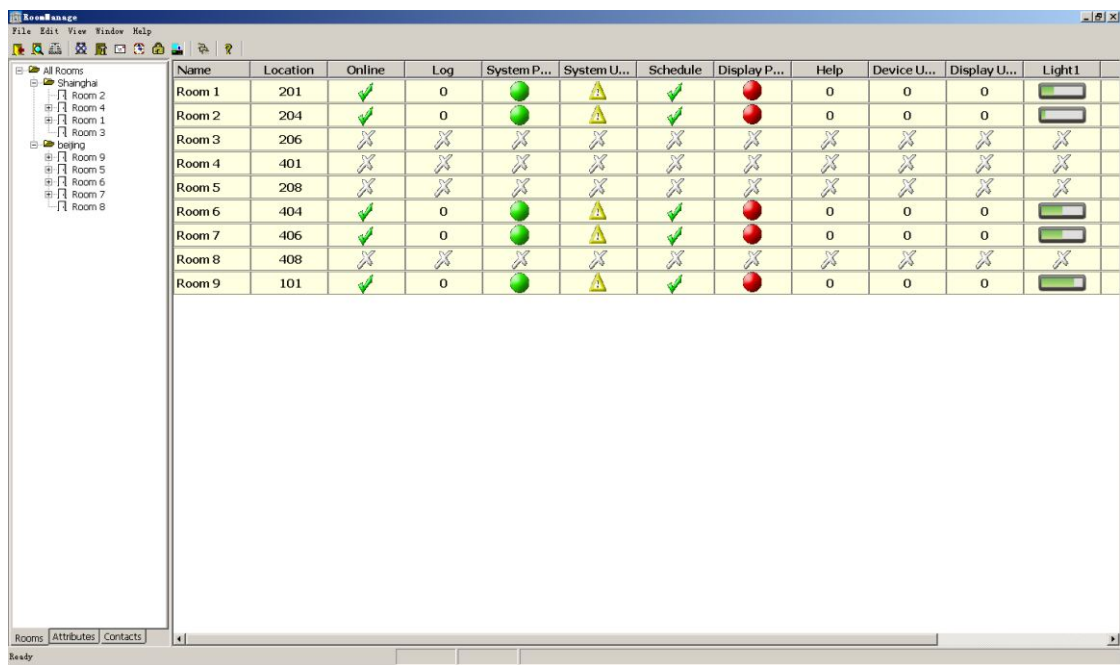
Web Server Interface

The Web Server is based on B/S architecture, with the central control main unit working as Web Server; the interface is designed by TP Vision Designer software and uploaded to the central control main unit. The user can access the main unit IP address from the IE web browser to monitor and control room or meeting room; the command is designed by the central control logic programming software and uploaded to the central control main unit.



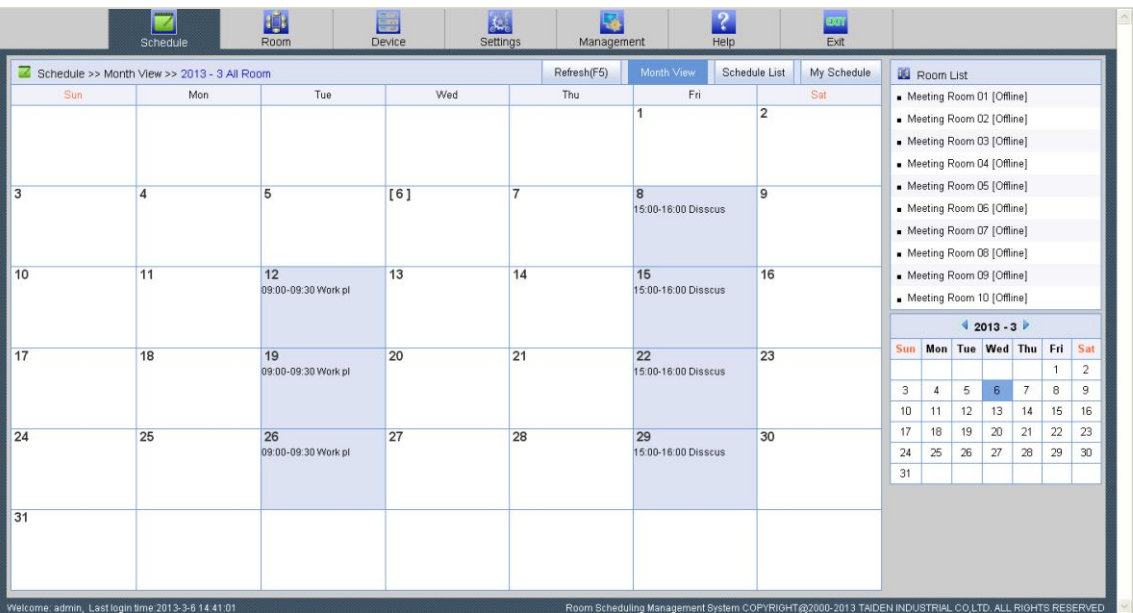
Multi-Room Management Software

HCS-6100 System Multi-Room Management Software is a central management software for controlling multiple rooms via Ethernet. The quantity of rooms that can be managed is decided by ID and IP address. Each room has a dedicated hardware device and the corresponding network control system in the system.



Room Scheduling Software

Room scheduling management system is a multi-user room management platform based on Ethernet. After configured room reservation in the server, user can login and query and make appointment via any computer in the LAN.



Accessories



HCS-6100SW/04C HCS-6100SW/12C

HCS-6100SW/C Series Wall-mounted Keypad

- Control method: second generation TAINET Control BUS
- ID select: via ID setup rotary switches (HI/LO)
- Button number: 2/4/8/12 respectively
- Command programming: user-defined command code by programming software
- Power consumption: max. 30 mA, 24 V DC, supplied by TAINET
- Dimensions (h x w x d): 119 x 86 x 11 mm



HCS-0108COM 8-series Distributor

- 1 channel of RS232 input for communication with main unit
- 1 channel of daisy chained output
- 8 channels of programmable RS232/RS485 (COM1-COM8) outputs (available baud rates: 50-115200 bit/s)
- The number of distributors can be extended up to 4 via daisy chain, extending the corresponding number of COM up to 32
- 1U high, full rack width



HCS-6100PMC 8 CHs Power-Supply Controller

- 8 independent power switch controls
- Load capacity:
AC: 10 A/250 V for each channel;
DC: 10 A/28 V for each channel
- Power consumption: max. 200 mA, 24 V DC supplied by TAINET
- Control method: second generation TAINET Control BUS or RS-232
- 1U high, full rack width



HCS-6100PMC 8 CHs Power-Supply Controller

- 8 independent power switch controls
- Load capacity: 240 V, 20 A for each channel
- Power consumption: max. 300 mA, 24 V DC supplied by TAINET
- Control method: second generation TAINET Control BUS
- Dimensions (h x w x d): 320 x 221 x 66 mm



HCS-6100LMC 4 CHs Lights High-Power Controller

- 4 controllable lighting interfaces
- Power supply: AC 100 V-120 V 60 Hz or AC 220 V-240 V 50 Hz
- Load capacity: power (single line) ≤ 1500 W
power (total) ≤ 5000 W
- Control method: second generation TAINET Control BUS
- Dimensions (h x w x d): 320 x 221 x 66 mm



HCS-6100LMFC 4 CHs Fluorescent Dimmer

- 4 channels of 4-wire 0 V - 10 V fluorescent dimming
- Switch load types including: incandescent, magnetic low-voltage, electronic low-voltage, neon/cold cathode, fluorescent, motors, etc.
- Supports 100 V - 240 V, 50 Hz / 60 Hz
- Maximum per channel: 30 A
- Dimensions (h x w x d): 320 x 221 x 66 mm



HCS-6107BAT Rechargeable Lithium-ion Battery

- Voltage: 11.1 V
- Capacity: 1530 mAh
- For HCS-6107TP series touch panel
- Optional color: black/gray



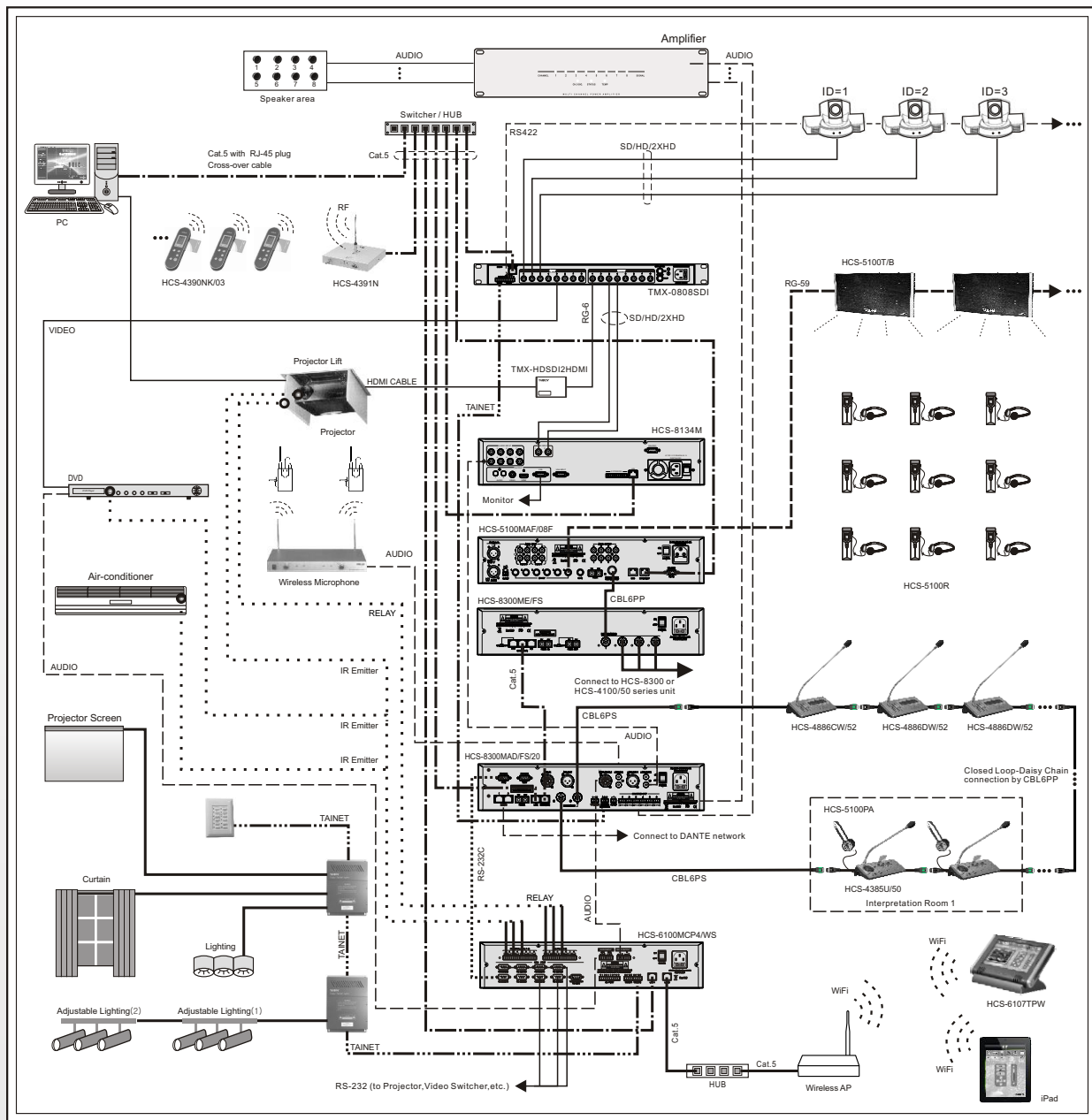
HCS-6110BAT External Rechargeable Lithium-ion Battery

- Portable battery pack
- Voltage: 16 V
- Capacity: 48.8 Wh
- For 10", 12" and 15" touch panels



HCS-6100 System IR Emitter Probe

- Matches HCS-6100MCP4 Series Network Central Control System Main Unit to achieve IR remote controlling for projector, DVD, PA, air condition, etc.
- With 1.2-meter-long cable



ISO9001:2000
Certified by UKAS
Certificate No.: FM 85884



CE certified
(including EMC and Safety)
Certificate No.: WT098003040 WT093001821



FCC certified
FCC ID: WGV6107TP

RoHS

Comply with Directive
2002/95/EC of the
European Parliament

Distributed by:



Member of International Congress
& Convention Association (ICCA)